



## **Rabbit anti Desmin (Paired T76/77) Polyclonal Antibody**

**Alternative Name(s): Desmin, Intermediate filament protein; CSM1, CSM2; CMD11**

### **Order Information**

- **Description:** Desmin (Paired T76/77)
- **Catalogue:** 602-290
- **Lot:** See label
- **Size:** 100ug/200ul
- **Host:** Rabbit
- **Clone:** nan
- **Application:** IHC(P), WB
- **Reactivity:** Hu, Ms, Rt

### **ANTIGEN PREPARATION**

A synthetic peptide corresponding to the N-terminus surrounding Threonine (Thr76/Thr77) without phosphorylation of human Desmin

### **BACKGROUND**

Desmin is a major intermediate filament protein found exclusively in striated (skeletal or cardiac) muscle tissue. It belongs to a large family of class III intermediate filament protein, the main intermediate filamentin mature skeletal, cardiac and smooth muscle cells. Mutations in the gene encoding desmin are associated with desmin-related myopathy, a familial cardiac and skeletal myopathy (CSM), and with distal myopathies. PKC (Protein Kinase C) and cAMP-dependent protein kinase can induce disassembly of the desmin filaments by phosphorylating multiple sites at N-terminus of desmin which can affect the desmin filament structure which play a role in the regulatory process in assembly and turnover.

### **PURIFICATION**

The Rabbit IgG is purified by Epitope Affinity Purification

### **FORMULATION**

This affinity purified antibody is supplied in sterile Phosphatebuffered saline (pH7.2) containing antibody stabilizer

### **SPECIFICITY**

This antibody recognizes ~55 kDa of human Desmin protein without phosphorylated Thr76/Thr77). It does not recognize phosphorylated peptides confirmed by dot blot. The other species are not tested.

### **STORAGE**

The antibodies are stable for 24 months from date of receipt when stored at -20oC to -70oC. The antibodies can be stored at 2oC-8oC for three month without detectable loss of activity. Avoid repeated freezing-thawing cycles.

### **APPLICATIONS/SUGGESTED WORKING DILUTIONS\***

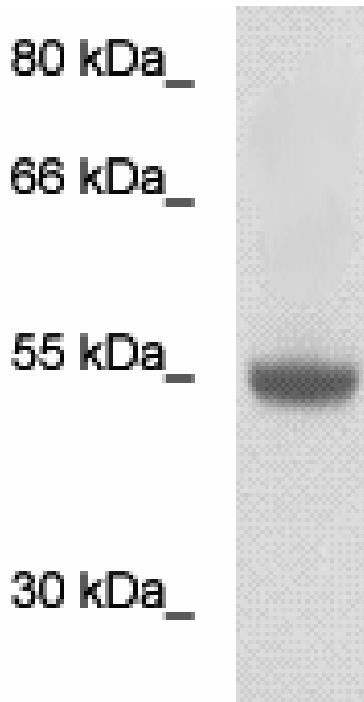
- Western Blot: 0.1-1 µg/ml
- ELISA: 0.01-0.1 µg/ml
- Immunoprecipitation: 2-5 µg/ml
- IHC: 2-10 µg/ml
- Flow cytometry: Not tested
- Molecular Weight: 55.0
- Positive Control: Kidney Tissue
- Cellular Location: Cell Membrane

\*Optimal dilutions should be determined by researchers for the specific applications.

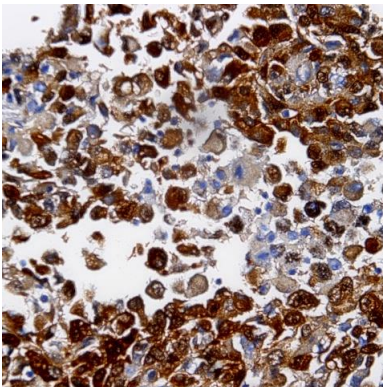
### **FOR RESEARCH USE ONLY.**

AbboMax, Inc 2528 Qume Drive, Suite 8, San Jose, California 95131, USA  
1 408-573-1898 (Tel). 1 408-573-1858 (Fax). [www.abbomax.com](http://www.abbomax.com) [info@abbomax.com](mailto:info@abbomax.com)

**DATA ATTACHMENTS**



Western Blot: The whole cell lysate derived from cardiac myocytes was loaded in 10% SDS-PAGE, transferred onto NC membrane, and immunoprobed by Rabbit anti-Desmin (Paired T76/T77), (Cat#602-290) at 1:500. An immune-reactive band is observed around ~55kDa.



Immunohistochemistry: Human sarcoma (FFPE) stained with Rabbit anti-Desmin (paired T76/T77) (Cat# 602-290) at 1:200 for 10 min @ RT. Staining of formalin-fixed tissue requires boiling tissue sections in 10 mM Citrate Buffer, pH 6.0 for 10 min followed by cooling at RT for 20 min.

**REFERENCES**

**FOR RESEARCH USE ONLY.**